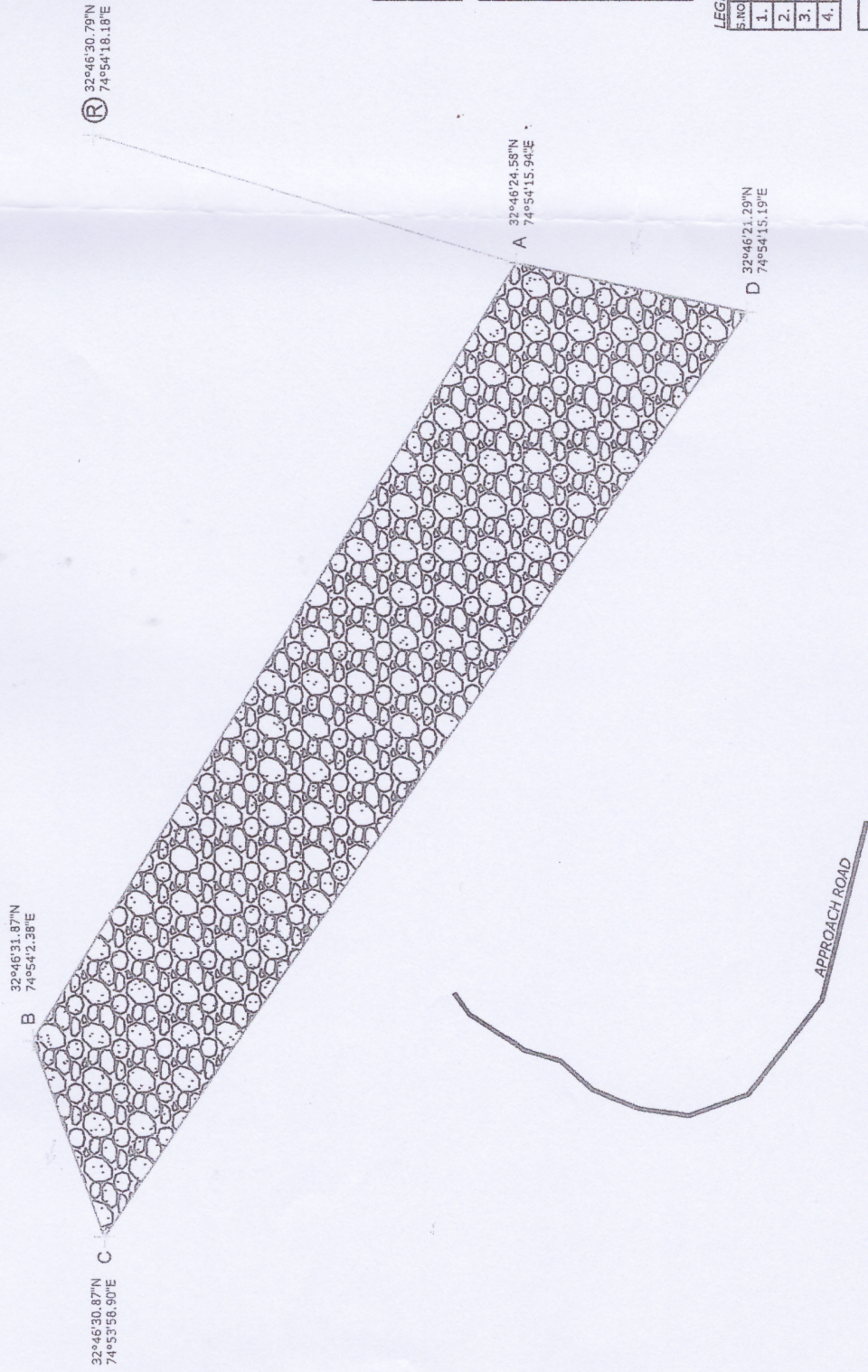


AT VILLAGE CHAK RAKWALAN, DISTT. JAMMU

AREA = 4.00 Hectare

SCALE:- 1:3000

6/5



B 32°46'31.87"N
74°54'2.38"E

C 32°46'30.87"N
74°53'58.90"E

A 32°46'24.58"N
74°54'15.94"E

D 32°46'21.29"N
74°54'15.19"E

(R) IS REFERENCE POINT TAKEN AS
DUGWELL ON RIGHT BANK
TAWI RIVER

INDEX:-

| STATION | | DISTANCE | BEARING |
|---------|----|----------|---------|
| FROM | TO | | |
| (R) | A | 199 M | 197° |
| A | B | 414 M | 302° |
| B | C | 94 M | 251° |
| C | D | 510 M | 125° |
| D | A | 106 M | 12° |

LEGEND:-

| S.No | PARTICULARS | SYMBOLS |
|------|---------------------|---------|
| 1. | PLAN | |
| 2. | SAND / BOULDER ETC. | |
| 3. | APPROACH ROAD | |
| 4. | RIVER FLOW | |

DEPARTMENT OF
GEOLOGY & MINING
J & K (UT) JAMMU

6/5