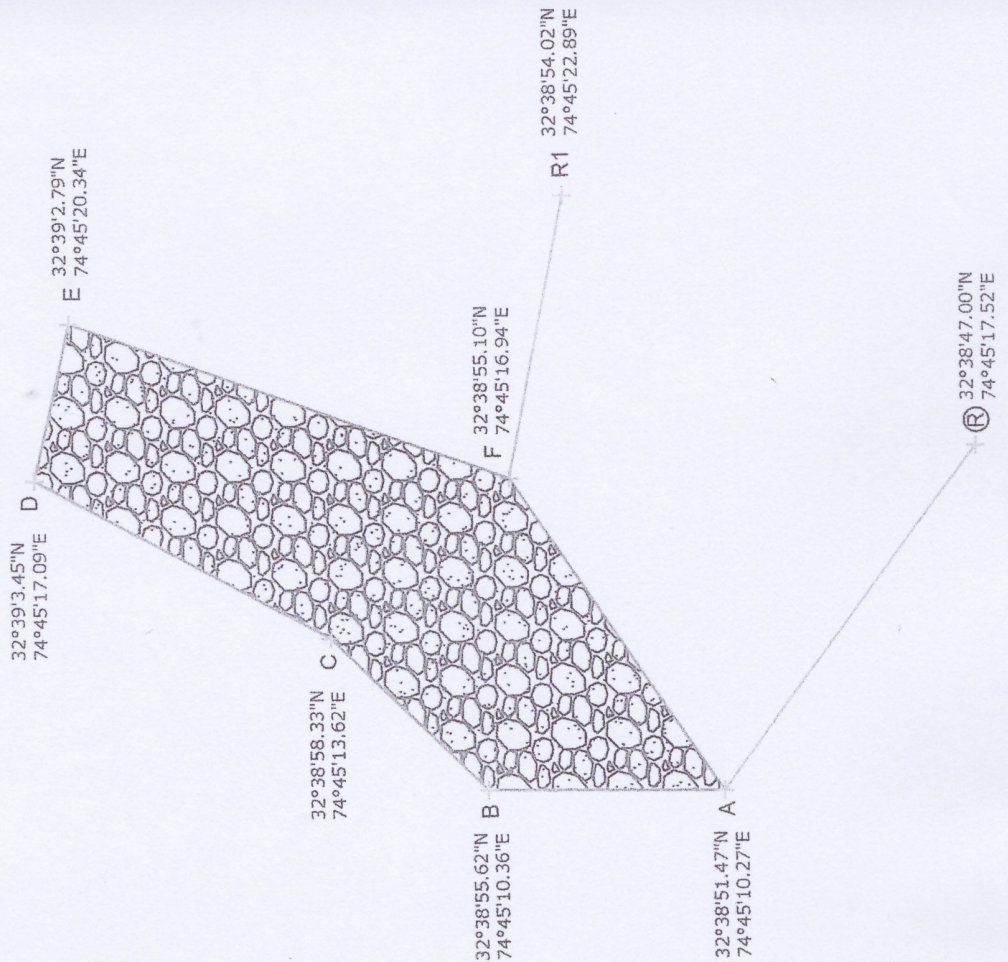


**SITE PLAN SHOWING MINOR MINERAL BLOCK IN NIKKI TAWI RIVER
(CONFLUENCE POINT OF NIKKI TAWI & BALOLE NALLAH)
AT VILLAGE TOP MANHASAN, DISTT. JAMMU**

AREA = 4.10 Hectare SCALE:-1:4000



R1 IS REFERENCE POINT TAKEN AS CONFLUENCE POINT OF BALOLE & NIKKI TAWI LEFT BANK ON THE LEFT BANK TAWI RIVER.

R IS REFERENCE POINT TAKEN AS NORTH WEST CORNER OF CREMATION SHED ON THE LEFT BANK TAWI RIVER.

INDEX:-

STATION	DISTANCE		BEARING
	FROM	TO	
R1	F	158 M	281°
(R)	A	234 M	306°
A	B	128 M	01°
B	C	120 M	45°
C	D	183 M	29°
D	E	87 M	103°
E	F	253 M	200°
F	A	208 M	237°

LEGEND:-

S.NO.	PARTICULARS	SYMBOLS
1.	PLAN	
2.	SAND / BOULDER ETC.	
3.	APPROACH ROAD	